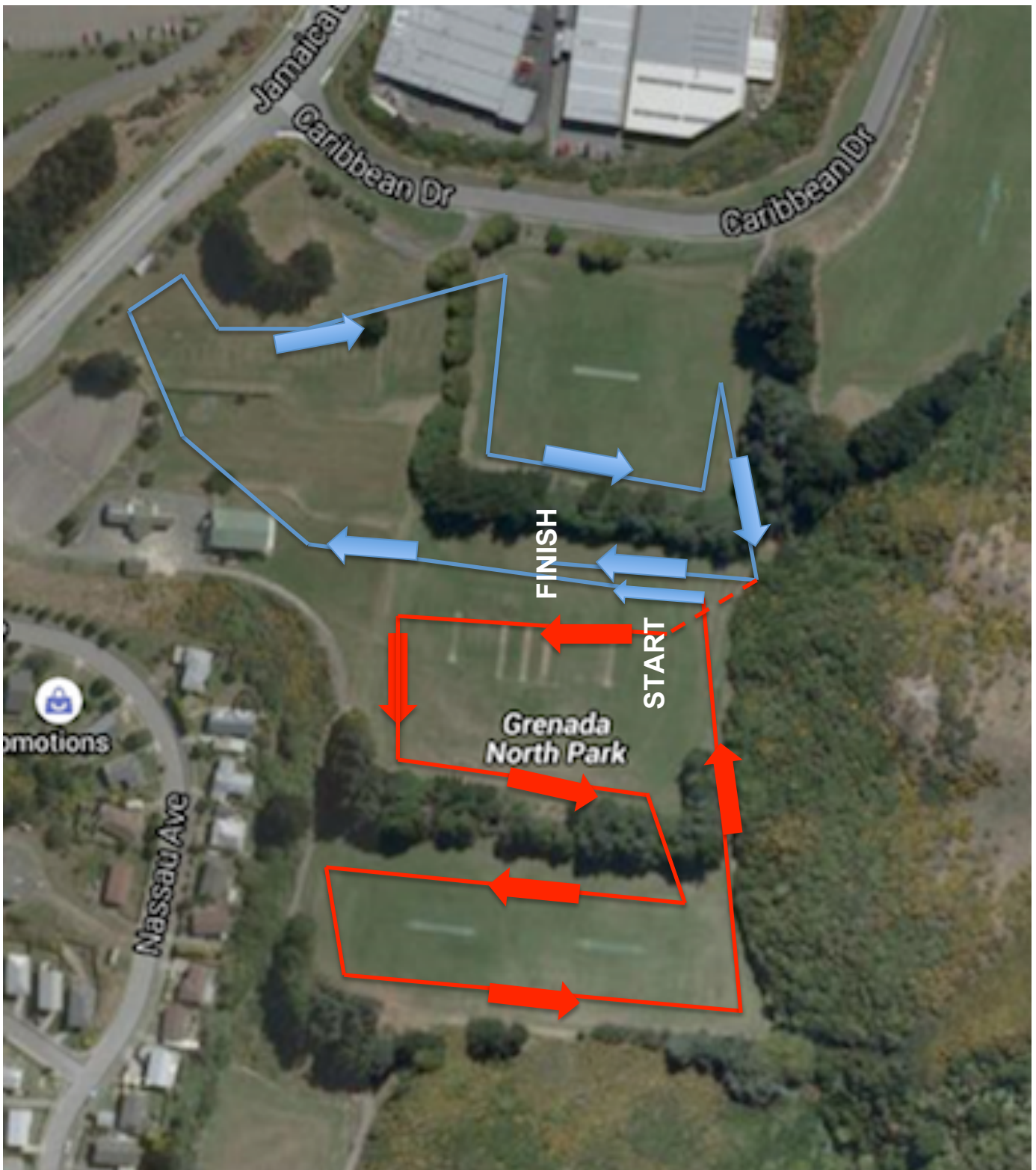


PSW INTERZONE CROSS COUNTRY @ GRENADA NORTH PARK YEAR 7 & 8 COURSE (approx 2.4km)

Note: most trees have now been removed from Grenada North Park



Year 7 & 8 Course = red loop followed by blue loop, then red dotted line to connect with red loop once more to finish (i.e. entire year 7 & 8 course = red loop, blue loop, red loop)