



ANNUAL REPORT

For the year 1st April, 2010 to 31st March, 2011

To be presented at the Annual General Meeting
To be held at 7.00pm on Tuesday 28 June, 2011
Newtown Park Stadium

Photographs courtesy Rowan Greig



Office Bearers 2010 -2011

President	Vacant
Chairperson	Stephen Underwood / Todd Stevens from March 2011
Board Members	Todd Stevens, Rod Plimmer, Mark Harris, Ian Murray, Nathan Lewer
Secretary	Vacant
Treasurer	Stephen Malanchak
Registrar	Andrew Tolley
Delegates to Council Of Athletics New Zealand	Stephen Underwood, Todd Stevens
Reviewer	WHK
Surveyor	Peter Maunder
Officials Coordinator	Jim McILroy
Cross country and road committee	
Chairman	Ian Priest (Deceased April 2011)
Secretary	Emma Brooks (Resigned February 2011)
Treasurer	Jennie Hardie
Committee	Peter Wrigley, Tony McKone, Chris Speakman
Track and Field committee	
Chairman	Rod Plimmer
Secretary	David Lonsdale
Treasurer	Ngaire Drake
Committee	Bernice Dickie, Lee Moran, Louise McDonald, Louise Hosegood Shelley Kalivati, Peter Rendall, Geoff Henry, Richard Thompson
Juniors committee	
Chairman	Vaughan Oates
Secretary	Louise McDonald
Treasurer	Rod Plimmer
Committee	Stuart Beresford, Jo Murray, Willy Szeto, Sally Mills, Don Dalgleish.

Chairperson's Report

The past year has seen significant progress for athletics in Wellington. Two years ago a new constitution was adopted for Athletics Wellington, and with it a new governance structure.

The Board of Athletics Wellington has responsibility for governance and strategic matters, with three committees responsible for the running of various programmes. Recently Ian Murray and Nathan Lewer have been appointed to the Board, bringing the number of Board members to 7. Building a strong and capable Board has been a particular focus over the past year, as this has been considered a vital first step to enabling the sport to move forward and realise its potential. Pleasing progress has been made to date with resourcing the committees with the personnel and capabilities required to run effective programmes.

Strategic plan

The Board has spent a lot of time over the last two years considering the future direction of athletics in Wellington and what should be done to realise the potential athletics has in Wellington. We believe it is important to have a strategic plan which will give us a clear vision for the future and guide our planning. I look forward to sharing with you tonight where the Board has got to with its planning.

Highlights

There have been a number of highlights over the past 12 months. These include:

The "Nick Willis" evening at Newtown Park in February. Although this track meeting was tinged with real sadness as it only came about because of the devastating earthquake in Christchurch, it highlighted what a wonderful ambassador Nick is for our sport, the fact that high quality athletics still a huge draw card for the general public, and that we have the resources to organise an outstanding event when everyone focuses their energy in the same direction.

The successful launch of the electronic timing system for the 2011 winter season (more on this in the Cross Country and Road report).

The ongoing development of our relationship with Sport Wellington. The Board has worked closely with Sport Wellington over the past year. We have substantially increased our involvement with Sport Wellington's Round the Bays event in February, resulting in \$7000 of income for us and a great opportunity to market ourselves to over 10,000 keen Wellingtonians.

We have been able to invest \$20,000 in the CoachForce coach development role.

The excellent performances recorded by Wellington athletes on both the national and international stage.

The strong participation and enthusiasm of so many children in athletics, both through clubs and schools.

Finances

Athletics Wellington has recorded an improved financial performance in 2011. Contributions from Athletics NZ, Sport Wellington and New Zealand Community Trust have allowed the Board to invest almost \$20,000 in the CoachForce programme. Particularly pleasing is \$7000 of new income from the Round the Bays event. Athletics Wellington's levy obligation to Athletics NZ has been \$74,000 for the last two years, which during 2011 was fully funded by club levies after a \$10,000 shortfall in 2010.

Acknowledgements

In April Ian Priest, a Life Member of Athletics Wellington sadly passed away. The time, effort and enthusiasm which Ian put into athletics will long be remembered and felt. He had a long history of membership of various committees of Athletics Wellington, especially cross country as Secretary and Chairman. Until as recently as March Ian held the key roles of Wellington Centre Registrar, Chair of the Cross Country and Road Committee, and Officials Coordinator. Ian will be greatly missed and his huge positive contribution to the sport over many years will not be forgotten.

At the AGM Stephen Underwood is retiring from the Board. Stephen was instrumental in the restructure of Athletics Wellington two years ago, by agreeing to take on the role as Chairman. We have benefited hugely over the last two years from his enthusiasm, depth of knowledge and contacts. On behalf of all in the sport, I thank him for his contribution and wish him all the best for his "retirement".

Thank you to everyone that has committed their time to make athletics happen in Wellington. Personally I'm looking forward to the next 12 months. We now have a solid platform for athletics in Wellington to make some real forward progress. I'm looking forward to continuing to work with you all.

Todd Stevens
Chairman



**Athletics Wellington Incorporated
Consolidated Financial Statements**

**Balance Sheet
As at 31 March 2011**

	2011 Board \$	2011 T&F \$	2011 Junior \$	2011 CC&Road \$	2011 Total \$	2010 Total \$
Funds Brought forward at 1 April	42,200	156,924	51,326	34,177	284,627	303,949
Surplus (deficit)	6,602	(9,780)	(1,063)	11,811	7,570	(19,322)
Funds at 31 March	48,802	147,144	50,263	45,988	292,197	284,627

Represented by:

Current Assets

Bank accounts and term deposits	40,526	35,452	48,406	14,509	138,893	175,926
Accounts receivable and prepayments	14,331	2,360	360	4,546	21,596	8,877
GST refund receivable	2,558	-	-	3,616	6,174	5,917
Total current assets	57,415	37,812	48,766	22,670	166,663	190,720

Fixed assets

	916	120,120	2,905	25,906	149,847	138,425
Total assets	58,331	157,931	51,671	48,577	316,510	329,145

Less

Current liabilities

Bank accounts	-	-	-	-	-	12,467
Accounts payable	9,529	10,667	940	2,589	23,725	31,757
GST	-	119	468	-	588	294
Total liabilities	9,529	10,787	1,408	2,589	24,313	44,518

Net assets


	48,802	147,144	50,263	45,988	292,197	284,627
--	--------	---------	--------	--------	---------	---------

Profit and Loss Statement


For the period ended 31 March 2011

Surplus (Deficit) for the 12 months ended 31 March 2011

	Revenue	Expenses	Surplus (deficit)	Surplus (deficit)
Board	105,939	99,337	6,602	(10,708)
Track and field	33,029	42,809	(9,780)	1,165
Junior committee	21,943	23,006	(1,063)	(12,175)
Cross country and road	27,565	15,755	11,811	2,396
Total	188,477	180,906	7,570	(19,322)


.....
Chairperson

Date: 10-6-11


.....
Treasurer

Date: 10-6-11



Athletics Wellington Incorporated Consolidated Accounts

For the 12 months ended 31 March 2011

Notes to the accounts

1. Statement of accounting policies

Reporting entity

The name of the entity is Athletics Wellington Incorporated. This entity is an incorporated society. The consolidated financial statements have been prepared in accordance with generally accepted accounting practice in New Zealand and include consolidation of the activities of the;

Board

Track and Field Committee

Junior Committee

Road and Cross Country Committee

Measurement base

The accounting principles recognised as appropriate for the measurement and reporting of profit and loss and financial position are on a historical cost basis and are followed by the entity.

Specific accounting policies

All statements have been prepared on a GST exclusive basis. Depreciation of fixed assets is provided on a straight line and diminishing value basis so as to allocate the cost of assets over their useful lives.

Athletics Wellington qualifies for differential reporting as it is not publicly accountable and based on the size criteria. Athletics Wellington (consolidated) has taken advantage of all available differential reporting exemptions.

Changes to accounting policies

There have been no changes in accounting policies. All policies have been applied on a consistent basis with those used in previous years.

2. Specific Accounting Policies.

Please refer to sub committee accounts for specific accounting policies and notes to the accounts.



**Athletics Wellington Incorporated
Board**

Balance sheet

As at 31 March 2011

	Notes	2011 \$	2010 \$
Equity as at 1 April (start of year)		42,200	83,908
Surplus / (Deficit) for the year		6,602	(10,708)
Equity as at 31 March (end of year)		<u>48,802</u>	<u>42,200</u>

Represented By:

Assets

Current assets

Westpac main account balance		2	-
Westpac call account		7,534	5,294
Westpac mountain running account balance		2,142	235
Westpac term deposit - executive		-	10,000
Westpac term deposit - mountain running fund		30,848	33,847
Accounts receivable	2	14,040	4,120
Accrued interest		182	158
Prepayments		139	133
GST refunds receivable		2,658	2,187
		<u>57,416</u>	<u>55,572</u>

Non current assets

Fixed assets	3	916	1,145
--------------	---	-----	-------

Total Assets		<u>58,331</u>	<u>57,117</u>
---------------------	--	---------------	---------------

Less liabilities

Current liabilities			
Westpac main account balance		-	12,487
Accounts payable	4	9,529	2,450
		<u>9,529</u>	<u>14,917</u>

Total liabilities		<u>9,529</u>	<u>14,917</u>
--------------------------	--	--------------	---------------

Net Assets		<u>\$ 48,802</u>	<u>\$ 42,200</u>
-------------------	--	------------------	------------------

Profit and Loss Statement

For the 12 months ended 31 March 2011

		2011 \$	2010 \$
Income			
Club levies		73,625	64,280
Accounts review fee recovery from Committees		2,820	2,820
Sundry income		-	160
Grants	5	5,000	-
Grants - Sport Wellington Coach Force		9,167	-
Donations		-	400
Interest received		2,358	1,988
Athletics Wellington committee contribution to Coach Force		6,000	-
Sport Wellington Round the Bays Levy		6,989	-
		<u>105,939</u>	<u>69,626</u>
Expenditure			
Athletics New Zealand levy		73,864	74,020
Grants paid ex Mountain running funds		2,600	2,500
Athletics New Zealand travel equalization		676	-
General		-	104
Printing postage and stationery		269	384
Depreciation	3	229	784
Treasurer expense reimbursement		400	400
Accounts review fee		2,100	2,050
Interest expense		62	-
Coach Force		19,167	-
Bank fees		50	92
		<u>99,337</u>	<u>80,334</u>
Surplus / (deficit) for the year		<u>6,602</u>	<u>(10,708)</u>
Net surplus / (deficit) for the year		<u>6,602</u>	<u>(10,708)</u>

Income and expenses are GST exclusive

Stephen Malarskiak, Treasurer Athletics Wellington

Date:

10-6-11



**Athletics Wellington Incorporated
Board**

For the 12 months ended 31 March 2011

Notes to the accounts

1. Statement of accounting policies

Reporting entity

The name of the entity is the Athletics Wellington Board (Board).
The financial statements of the Board have been prepared in accordance with generally accepted accounting practice in New Zealand.

Measurement base

The accounting principles recognised as appropriate for the measurement and reporting of profit and loss and financial position are on a historical cost basis and are followed by the Board.

Specific accounting policies

All statements have been prepared on a GST exclusive basis. Depreciation of fixed assets is provided on a diminishing value basis so as to allocate the cost of assets over their useful lives.

The Board qualifies for differential reporting as it is not publicly accountable and on the size criteria. The Board has taken advantage of all differential reporting exemptions.

Income Tax

Athletics Wellington Inc is a non profit sporting body that is exempt from paying income tax.

Changes to accounting policies

There have been no changes in accounting policies. All policies have been applied on a consistent basis with those used in previous years.

2. Accounts receivable includes amounts due from Athletics Wellington affiliated clubs for levies due 31 March 2011 and amounts due from Athletics Wellington committees'.

3. Fixed Assets

Traffic safety cones

	2011	2010
Balance 1 April 2010	1,145	1,717
Less: depreciation@ 20% diminishing value	229	572
Balance 31 March 2011	916	1,145

AW representative uniforms

Balance 1 April 2010	-	212
Less: depreciation@ 40% diminishing value	-	212
Balance 31 March 2011	-	-

Total book value 31 March 2011	916	1,145
Total depreciation charge 2011	229	784

4. Accounts payable for 2011 relates to financial statement review fees \$2,050 (2010: \$2,050), treasurer incidental costs \$400 (2010: \$400) and levies payable to Athletics New Zealand \$7,079 (2010: nil)

5. List of grants received during the year

	2011	2010
NZ Community Trust	5,000	-
Total grants	5,000	-

The NZCT grant for \$5,000 was received to fund Coach Force.

6. Statement of Commitments

There were no operating or capital lease commitments at balance date (2010: nil).

7. Contingent Liabilities

There were no known contingent liabilities at balance date (2010: nil).

Level 6 Westfield Tower 45 Knights Road
Lower Hutt Wellington New Zealand

PO Box 30-568
Lower Hutt 5040

T 04 569 9069
F 04 566 6077

wellington@whk.co.nz
www.whk.co.nz

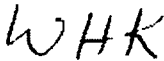
REVIEW ENGAGEMENT REPORT TO:

The Committee members of Athletics Wellington Incorporated Board

We have reviewed the financial statements of Athletics Wellington Incorporated Board for the year ended 31 March 2011 in accordance with the Review Engagement Standards issued by the New Zealand Institute of Chartered Accountants.

A review is limited primarily to enquiries of company personnel and analytical review procedures applied to financial data and thus provides less assurance than an audit. We have not performed an audit and, accordingly, we do not express an audit opinion.

Based on our review, nothing has come to our attention that causes us to believe that the accompanying financial statements do not give a true and fair view.



**WHK Wellington Partnership
Chartered Accountants
10 June 2011**

Cross Country and Road Committee Report

Annual Report for the 2011 Season

(12 Months ending 31st March, 2011)

Officers:	Chair	Ian Priest (Deceased April 2011)
	Secretary	Emma Brooks (resigned February 2011)
	Treasurer	Jennie Hardie
	Committee	Peter Wrigley, Tony McKone, Chris Spackman
	Selectors	Don Dalgliesh Graham Tattersall
Chief Referee	Alan Stevens	
Chief Timekeeper	Dave Grattan	
Team Managers	Don Dalgliesh	

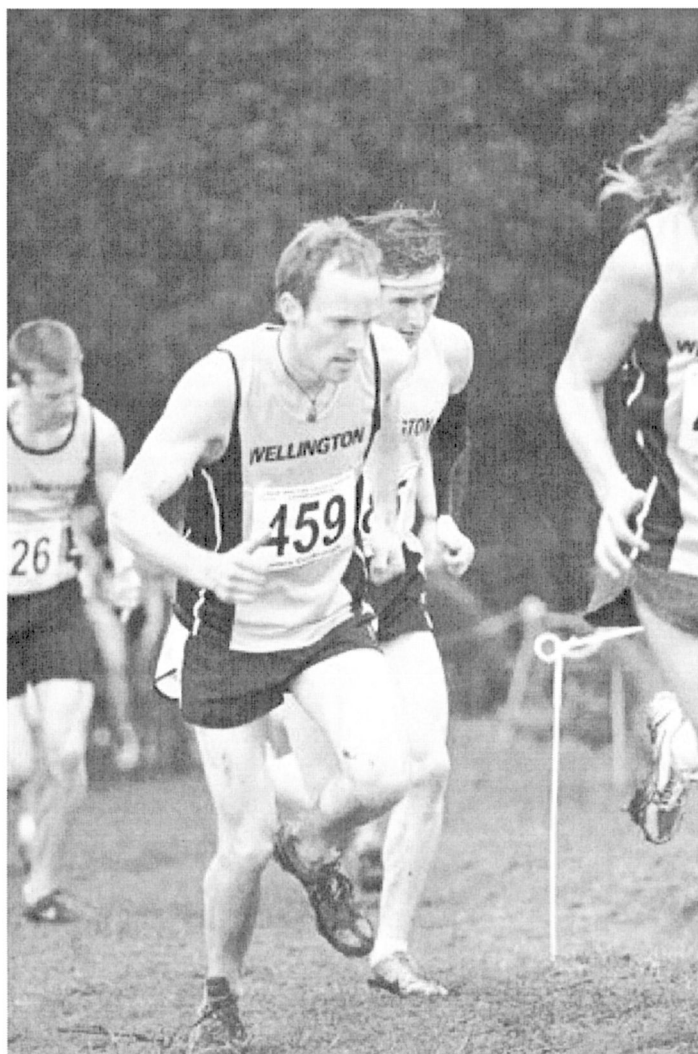
The purchase and successful roll out of the electronic timing system (ETS) has been the highlight of the last 12 months for the Cross Country and Road section of Athletics Wellington. A lot of time and effort went into making the ETS a reality, and all involved (particularly Emma Brooks and Tony McKone) deserve a big thanks. The decision to spend almost \$30,000 was not made lightly, but the business case has the cost being recouped over approximately 5 years with good upside from external hiring fees. Also, we are extremely grateful to New Zealand Community Trust and Pelorus Trust for grants which covered approximately half the cost.

Wellington hosted the 2010 New Zealand Cross Country Champs, with the Kapiti putting on an excellent event at Waikanae. Having one of New Zealand's premiere championship in Wellington is of great benefit to athletics in Wellington: it gives our athletes an advantage by competing on a course they know, there are obvious financial advantages for our athletes, friends and family are able to support our athletes, and we can develop our organisational capability.

Representative teams were selected for the North Island Cross Country Championships, New Zealand Cross Country Championship and New Zealand Road Championship. Some outstanding performances were recorded by Wellington athletes and our teams won many age grade medals. Wellington again won the Top Centre competition at the North Island champs. Half the Wellington team was already in Christchurch for the New Zealand Road Championships when the massive earthquake struck the Canterbury region the morning of the champs. Our athletes had a very traumatic experience. The champs were eventually rescheduled 6 weeks later in Auckland, but the size of our representative team was very small.

As noted in the Chairman's report, the Chair of the Cross Country and Road Committee, Ian Priest, passed away recently. His depth of knowledge and enthusiasm for cross country and road will be greatly missed. In April the New Zealand Mountain running championships were held on Colonial Knob in Porirua. Ian was the driver behind bringing the champs to Wellington and in particular for the choice of Colonial Knob. It was with great reluctance that Ian had to step down as the Event Manager.

Todd Stevens



**Athletics Wellington Incorporated
Road and Cross Country Committee**

Balance sheet

As at 31 March 2011

	Notes	2011	2010
Equity as at 1 April (start of year)		34,177	31,781
Surplus for the year		11,811	2,396
Equity as at 31 March (end of year)		<u>45,988</u>	<u>34,177</u>
Represented By:			
Assets			
Current assets			
Bank		4,281	1,931
Call account		80	-
Term deposit		10,168	31,588
GST receivable		3,016	-
Accounts receivable		4,546	1,057
		<u>22,670</u>	<u>34,576</u>
Non current assets			
Fixed assets	2	<u>25,906</u>	<u>906</u>
Total Assets		48,577	35,482
Less liabilities			
Current liabilities			
Sundry creditors		2,589	1,010
GST payable		-	294
Total current liabilities		<u>2,589</u>	<u>1,304</u>
Net Assets		<u>\$ 45,988</u>	<u>\$ 34,177</u>

Profit and Loss Statement

For the year ended 31 March 2011

		2011 12 months	2010 14 months
Income			
Sanction fees		10,238	11,606
Medals		728	526
Grants	3	14,548	-
Rental income - caravan		238	508
Uniforms		36	36
Other income		1,002	1,443
Bank interest		715	1,283
		<u>27,565</u>	<u>15,273</u>
Expenditure			
Caravan and equipment		-	82
Subsides / entry fees		3,945	2,848
Medals		1,273	1,170
Managers expenses		2,916	5,178
General expenses		704	790
Treasurer and secretarial expenses		-	750
Accounts review fee		940	840
Grants refunded		-	912
Training		443	-
Athletics Wellington - Coach Force		2,000	-
Uniforms		554	-
Depreciation	2	<u>2,879</u>	<u>226</u>
Total expenditure		<u>15,755</u>	<u>12,877</u>
Surplus for the year		11,811	2,396

Income and expenses are GST exclusive

Jennie Hardie, Treasurer Cross Country and Road Committee

Date:

10 - 6 - 11



**Athletics Wellington Incorporated
Road and Cross Country Committee**

For the 12 months ended 31 March 2011

Notes to the Accounts

1. Statement of Accounting policies

Reporting entity

The name of the entity is the Road and Cross Country Committee, Athletics Wellington. The financial statements of the Road and Cross Country Committee have been prepared in accordance with generally accepted accounting practice in New Zealand.

Measurement base

The accounting principles recognised as appropriate for the measurement and reporting of profit and loss and financial position are on a historical cost basis and are followed by the committee.

Specific accounting policies

All statements have been prepared on a GST exclusive basis. Depreciation of fixed assets is provided on a diminishing value basis so as to allocate the cost of assets over their useful lives.

The Committee qualifies for differential reporting as it is not publicly accountable and on the size criteria. The Committee has taken advantage of all differential reporting exemptions.

Income Tax

Athletics Wellington Inc is a non profit sporting body that is exempt from paying income tax.

Changes to accounting policies

There have been no changes in accounting policies. All policies have been applied on a consistent basis with those used in previous years.

2. Fixed Assets Register and depreciation schedule

Asset	Purchase Date	Cost	Additions	Life (Yrs)	%	Value 2010	Depreciation	Value 2011
Start / finish flags	1/04/2006	2,234	-	5	20.00%	906	181	725
Times 7 chip timing system	1/10/2010	-	27,980	5	20.00%	-	2,798	25,182
		<u>2,234</u>	<u>27,980</u>			<u>906</u>	<u>2,979</u>	<u>25,906</u>

3. List of grants received during the year

	2011	2010
Pelorus Trust	8,000	-
NZ Community Trust	6,548	-
Total grants	<u>14,548</u>	<u>-</u>

The Pelorus Trust grant of \$8,000 and NZCT grant for \$6,548 were received to fund purchase of the electronic chip timing system.

4. Statement of Commitments

There were no operating or capital lease commitments at balance date (2010: nil).

5. Contingent Liabilities

There were no known contingent liabilities at balance date (2010: nil).

Level 6 Westfield Tower 45 Knights Road
Lower Hutt Wellington New Zealand

PO Box 30-568
Lower Hutt 5040

T 04 569 9069
F 04 566 6077

wellington@whk.co.nz
www.whk.co.nz

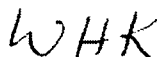
REVIEW ENGAGEMENT REPORT TO:

The Committee members of Athletics Wellington Incorporated Road and Cross Country Committee

We have reviewed the financial statements of Athletics Wellington Incorporated Road and Cross Country Committee for the year ended 31 March 2011 in accordance with the Review Engagement Standards issued by the New Zealand Institute of Chartered Accountants.

A review is limited primarily to enquiries of company personnel and analytical review procedures applied to financial data and thus provides less assurance than an audit. We have not performed an audit and, accordingly, we do not express an audit opinion.

Based on our review, nothing has come to our attention that causes us to believe that the accompanying financial statements do not give a true and fair view.

A handwritten signature in black ink that reads 'WHK' in a stylized, cursive font.

**WHK Wellington Partnership
Chartered Accountants
10 June 2011**

Junior Committee Report

Annual Report for the 2011 Season (12 months ended 31 March 2011)

Officers:

Chair	Vaughan Oates
Secretary	Louise McDonald
Treasurer	Rod Plimmer
Committee	Willy Szeto, Jo Murray, Sally Mills, Stuart Beresford, Don Dalgleish

Junior athletics has continued to run smoothly under a stable model that has yielded national level results for several seasons. Wellington based athletes continue to make national age grade teams with Leesa Lealaisalanoa and Ryan Tinkle leading the way. We have also been involved at the management level with John Quinn of Carterton being selected as a coach for the silver level athletes in the current Rio Squad and assisting with the New Zealand team attending the Grand Prix event in Kawasaki, Japan early in May.

Wellington continues to perform well at the National Interprovincial Athletics Teams event held at Easter for 12 and 13 year olds. Although it would be hard to begrudge Canterbury their win after the difficulties they will have faced during the season Auckland remains our bogey team beating us into third place at Inglewood this year.

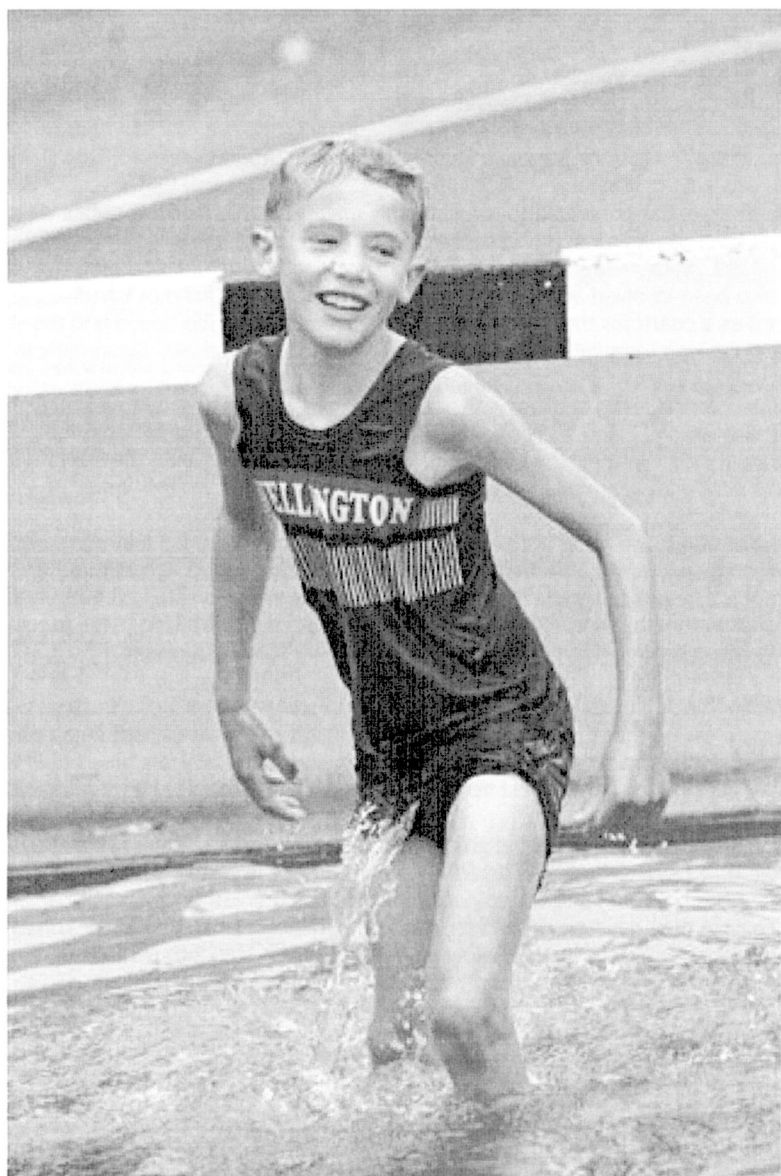
It was pleasing to welcome both Mid Valley and Otaki back into the fold this season after some hiccups with their affiliation status, with both clubs filling a vacuum in the geographical coverage for the region. This still leaves Wainuiomata and Porirua as the main gaps in the province, although I am aware of discussions taking place to reintroduce clubs to these centres things are at a very preliminary stage at present.

The Wellington Junior championships saw a record number of entries this season, it was therefore pleasing that the weather gods smiled on us and allowed both days to be completed within the scheduled timeframe. As always many athletes timed their season perfectly peaking to set new best performances in winning their events.

As some of you will know I intend stepping aside as convenor of Junior Athletics in Wellington. I have always considered it important that the people running the sport at the junior level have a more direct involvement than either continuing what has always been done or they have grandchildren involved with local clubs. The junior committee has well documented procedures allowing new comers to step into management roles and I am confident I am leaving junior athletics in Wellington in good hands.

I am not saying goodbye to the sport completely however and will continue to process the results from Saturday afternoons and will be available to provide any assistance I can.

Vaughan Oates
Chairman
Junior Committee





**Athletics Wellington Incorporated
Junior Committee**

Balance sheet	Notes	2011	2010
As at 31 March 2011			
Equity as at 1 April (start of year)		51,326	63,501
(Deficit) for the year		(1,063)	(12,175)
Equity as at 31 March (end of year)		<u>50,264</u>	<u>51,326</u>
Represented By:			
Assets			
Current Assets			
National bank - main account		18,186	16,953
National bank - Coigates		2,412	2,400
National bank term deposit 3.5% matures 14 June 2011		27,809	28,722
GST receivable		-	1,968
Accrued interest		360	468
		<u>48,766</u>	<u>48,528</u>
Non Current Assets			
Equipment		2,906	3,738
Fixed assets	2	<u>2,906</u>	<u>3,738</u>
Total Assets		<u>51,672</u>	<u>52,266</u>
Less liabilities			
Current liabilities			
Sundry creditors		940	940
GST Payable		468	-
		<u>1,408</u>	<u>940</u>
Total liabilities		<u>1,408</u>	<u>940</u>
Net assets		<u>50,264</u>	<u>51,326</u>

Profit and Loss Statement

For the 12 months ended 31 March 2011

	2011	2010
Income		
Club registrations	10,456	14,052
Interprovincial fees	3,319	18,892
Grants	5,000	7,000
Interest	1,018	1,147
Equipment hire	356	-
Wellington championships	1,797	2,425
	-	-
Total income	<u>21,943</u>	<u>43,516</u>
Expenditure		
Wellington championships	4,386	1,884
Grade patches	2,389	1,872
NZCCA affiliation and AGM fees	76	400
Miscellaneous	2,318	2,930
Depreciation	832	1,222
Accounts review fee	940	940
Colgate Interprovincials	12,061	46,643
Total expenditure	<u>23,006</u>	<u>55,690</u>
(Deficit) for the year	<u>(1,063)</u>	<u>(12,175)</u>

*Income and expenses are GST exclusive
Rod Plimmer, Treasurer, Junior Committee*

Date: 

10 - 6-11



**Athletics Wellington Incorporated
Junior Committee**

For the 12 months ended 31 March 2011

Notes to the Accounts

1. Statement of Accounting policies

Reporting entity

The name of the entity is the Junior Committee, Athletics Wellington.
The financial statements of the Junior Committee have been prepared in accordance with generally accepted accounting practice in New Zealand.

Measurement base

The accounting principles recognised as appropriate for the measurement and reporting of profit and loss and financial position are on a historical cost basis and are followed by the committee.

Specific accounting policies

All statements have been prepared on a GST exclusive basis. Depreciation of fixed assets is provided on a diminishing value basis so as to allocate the cost of assets over their useful lives.

The Committee qualifies for differential reporting as it is not publicly accountable and on the size criteria. The Committee has taken advantage of all differential reporting exemptions.

Income Tax

Athletics Wellington Inc is a non profit sporting body that is exempt from paying income tax.

Changes to accounting policies

There have been no changes in accounting policies. All policies have been applied on a consistent basis with those used in previous years.

2. Fixed Assets Register and depreciation schedule

Asset	Cost	Additions	Life (Years)	%	Value 2010	Depreciation	Accm Depn	Value 2011
Hard equipment	5,501		10	12.5	811	101	4,791	710
Singlets	897		3	40.0	49	20	868	29
Walkie talkies	1,067		20	12.5	493	64	838	428
Tent	2,667		5	24.0	622	149	2,194	473
Laptop	1,807		4	30.0	257	77	1,427	180
Batteries	747		3	40.0	65	22	714	33
Printer	371		5	24.0	93	22	300	71
Tracksuits	6,140		3	40.0	462	185	5,863	277
Singlets	1,949		3	40.0	146	58	1,861	88
Discus/shots	311		10	12.5	154	20	177	134
Discus/shots	428		10	12.5	286	36	178	250
Colour printer	626		4	25.0	310	78	394	232
	22,311	-			3,738	832	19,011	2,908

3. List of grants received during the year

	2011	2010
Pelorus Trust	5,000	5,000
Infinity Foundation Limited	-	2,000
Total grants	5,000	7,000

The Pelorus Trust grant of \$5,000 was received to fund transport and accommodation costs for the Wellington team to attend the 2011 Colgate Interprovincial championship.

4. Statement of Commitments

There were no operating or capital lease commitments at balance date (2010: nil).

5. Contingent Liabilities

There were no known contingent liabilities at balance date (2010: nil).

Level 6 Westfield Tower 45 Knights Road
Lower Hutt Wellington New Zealand

PO Box 30-568
Lower Hutt 5040

T 04 569 9069
F 04 566 6077

wellington@whk.co.nz
www.whk.co.nz

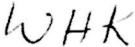
REVIEW ENGAGEMENT REPORT TO:

The Committee members of Athletics Wellington Incorporated Junior Committee

We have reviewed the financial statements of Athletics Wellington Incorporated Junior Committee for the year ended 31 March 2011 in accordance with the Review Engagement Standards issued by the New Zealand Institute of Chartered Accountants.

A review is limited primarily to enquiries of company personnel and analytical review procedures applied to financial data and thus provides less assurance than an audit. We have not performed an audit and, accordingly, we do not express an audit opinion.

Based on our review, nothing has come to our attention that causes us to believe that the accompanying financial statements do not give a true and fair view.



WHK Wellington Partnership
Chartered Accountants
10 June 2011

Track & Field Committee Report

Annual Report for the 2011 Season (12 months ended 31 March 2011)

Chair	Rod Plimmer
Secretary	David Lonsdale
Treasurer	Ngaire Drake
Committee	Bernice Dickie, Lee Moran, Louise McDonald, Peter Rendall, Richard Thompson, Shelley Kalivati, Geoff Henry.

Track and Field Committee report

The 2010/11 Track and Field season was not as hectic as previous seasons in which we have hosted the NZ Track and Field Championships and the North Island Secondary School Championships but it was still a full and busy time for us.

The Centre held over 20 senior events at Newtown Park over the season ranging from Black and Gold programmes to the Capital Classic. One can also not forget that memorable Saturday evening when an impromptu meeting was held in support of the people of Canterbury following the earthquake in February. Congratulations to Nick Willis, Tony Rogers, Tim Hawkes, Geoff Henry, David Lonsdale and Rees Buck for their organisation in pulling a meeting together in a matter of days. The event was attended by more than three thousand, and raised more than \$20,000 for Canterbury. The highlights of the night were the presentation of Nick's Olympic silver medal and the first sub-4 minute miles for more than a decade at Newtown Park.

A new committee has been established and I encourage you to be in touch with one of the members if you have some ideas or are willing to help in any fashion. I chair the new committee and the members are Richard Thompson, Ngaire Drake, David Lonsdale, Geoff Henry, Louise Evans-McDonald, Louise Hosegood, Peter Rendall, Lee Moran, Shelley Kalivati, Bernice Dickie and Jim Blair.

It has been noted that participation in the Black and Gold programmes has dwindled and it is one of the goals of the new committee to increase participation at this level.

I congratulate our team of officials now under the guidance of Jim McIlroy who continue to provide a great service to our Centre with their commitment of time and energy. Their focus on the athlete is admirable, often putting on extra events to allow an athlete to complete their time trial for the week or get one more competition based practice in before their next major meeting.

There were a number of highlights throughout the season that can be reflected on with some pride:

- At the NZ Track and Field Championships held in Dunedin from our 76 entrants we collected over 50 medals.
- John Quinn who has been a prominent coach and member of the Junior Track and Field Committee was voted Sportsperson of the Year in the Wairarapa.
- We have a number of representatives in NZ teams heading overseas in the coming months we wish them well at their respective events:
 - Quentin Rew will walk at the World Championships
 - Hamish Carson (1500m) to the World University Games in China
 - Keiron McDonald (1500m), Alex Fafeita (hammer) and John Quinn (coach) to the Commonwealth Youth Champs in the Isle of Man.
 - Kwame Williams-Accra (100m, 200m) to the World Special Olympics in Greece

There are also several athletes at a training camp in Germany, who are hoping to compete over there.

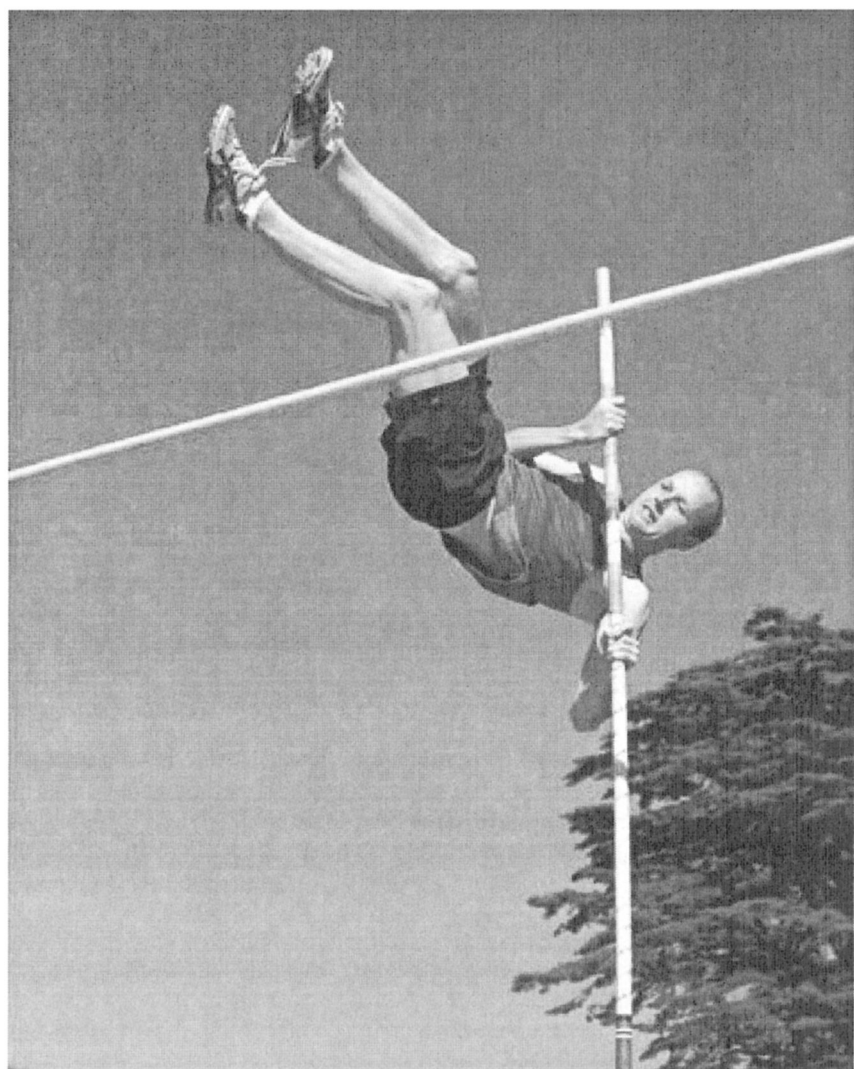
I would like to take this opportunity to thank past committee members who have provided much service to the sport. One cannot go past the outstanding contribution made by Peter and Sylvia Maunder on this committee and as leading officials for the Centre and New Zealand. They have now relocated to the Wairarapa so are not able to attend every athletics meeting but are still keenly involved and their valued contribution will still be sought.

Special mention should also be made of Peter Baillie, Ed Hutchinson, John Gallagher and the late Ian Priest for their tireless work on the camera and timing system at Newtown Park without which we would be in dire straits.

This coming season sees the biggest track and field event in NZ in terms of participants, the New Zealand Secondary School Championships being held at Newtown Park, this is being coordinated under the guidance of Ngaire Drake from College Sport Wellington. It gives our local athletes a chance to shine on their home track and we are hoping for some great results there.

There will be a slight delay to the start of our 2011/2012 season due to the Rugby World Cup using Newtown Park as a training venue however we will look forward to a full and exciting track and field season.

Rod Plimmer
Chair
Track and Field Committee





**Athletics Wellington Incorporated
Track and Field Committee**

Balance sheet As at 31 March 2011	Notes	2011	2010
Equity as at 1 April (start of year)		166,924	165,789
(Deficit) / Surplus for this year		(9,780)	1,185
Equity as at 31 March (end of year)		<u>147,144</u>	<u>166,974</u>
Represented By:			
Assets			
Current Assets:			
Wespac main account balance		9,121	11,334
Wespac cash account		28,351	35,622
Accounts receivable		2,360	2,825
GST receivable		-	1,762
		<u>37,812</u>	<u>51,543</u>
Non Current Assets			
Equipment and gear shed		78,006	65,873
Finish Lynx system and computer equipment		34,859	38,732
Cups and shields		262	262
Hurdles		5,893	7,770
		<u>120,120</u>	<u>132,637</u>
Fixed assets	2	120,120	132,637
Total Assets		<u>157,931</u>	<u>194,280</u>
Less liabilities			
Current liabilities			
Accounts payable		10,867	27,357
GST payable		119	-
		<u>10,787</u>	<u>27,357</u>
Total liabilities		<u>10,787</u>	<u>27,357</u>
Net assets		<u>147,144</u>	<u>166,924</u>

**Profit and Loss Statement
For the 12 months ended 31 March 2011**

	2011	2010
Income		
Bank interest	727	404
Equipment hire	7,862	10,646
Club levy	6,937	8,360
Uniforms	-	171
Wellington champs	1,330	1,081
League	465	493
Nationals	5,231	4,986
Classic	1,604	4,404
Oreite	7,450	16,500
Other income	1,404	1,980
	<u>33,029</u>	<u>46,446</u>
Total income	33,029	46,446
Expenditure		
Photocopying, printing, postage, power	610	531
Athletics Wellington - Coach Force	2,000	-
Venue and equipment hire	2,493	1,717
Depreciation	13,318	14,706
Equipment maintenance	3,634	3,050
Insurance	1,046	1,230
Catering	793	-
Uniforms	172	528
Classic	357	3,261
Nationals	9,907	11,928
Wellington champs	17	633
Newtown park hire	7,488	6,781
Accounts review fee	940	940
Bank fee	85	65
	<u>42,908</u>	<u>45,261</u>
Total expenditure	42,908	45,261
(Deficit) / surplus for the year	(9,780)	1,185

*Income and expenses are GST exclusive
Neville Drake, Treasurer, Track and Field Committee*

PP

Date: 10-6-11



**Athletics Wellington Incorporated
Track and Field Committee**

For the 12 months ended 31 March 2011

Note to the Accounts

1. Statement of Accounting policies

Reporting entity

The name of the entity is the Track & Field Committee, Athletics Wellington. The financial statements of the Track & Field Committee have been prepared in accordance with generally accepted accounting practice in New Zealand.

Measurement base

The accounting principles recognised as appropriate for the measurement and reporting of profit and loss and financial position are on a historical cost basis and are followed by the committee.

Specific accounting policies

All statements have been prepared on a GST exclusive basis. The Committee's fixed assets are depreciated at a rate of 10% diminishing value per annum. There is no depreciation for the cups and shields. The Committee qualifies for differential reporting as it is not publicly accountable and on the size criteria. The Committee has taken advantage of all differential reporting exemptions.

Income Tax

Athletics Wellington inc is a non profit sporting body that is exempt from paying income tax.

Changes to accounting policies

There have been no changes in accounting policies. All policies have been applied on a consistent basis with those used in previous years.

2. Equipment and gear shed	2011	2010
Balance 1 April 2010.	85,873	79,211
Purchases	800	16,204
	<u>86,673</u>	<u>95,415</u>
Less: depreciation @ 10% DV	8,667	9,541
Balance 31 March 2011	<u>78,006</u>	<u>85,873</u>
Finish Lynx finishing system and computer equipment	2011	2010
Balance 1 April 2010	38,732	43,036
Purchases	-	-
	<u>38,732</u>	<u>43,036</u>
Less: depreciation @ 10% DV	3,873	4,304
Balance 31 March 2011	<u>34,859</u>	<u>38,732</u>
Hurdles		
Balance 1 April 2010.	7,770	8,633
Purchases	-	-
	<u>7,770</u>	<u>8,633</u>
Less: depreciation @ 10% DV	777	863
Balance 31 March 2011	<u>6,993</u>	<u>7,770</u>
Cups and Shields		
Balance 31 March 2011	<u>262</u>	<u>262</u>
Total depreciation	13,316	14,708
Total book value at 31 March	120,120	132,637
There is no depreciation on the cups and shields		
3. List of grants received during the year	2011	2010
Pub Charity	-	2,500
Lion Foundation	7,450	14,000
Total grants and donations	<u>7,450</u>	<u>16,500</u>

The 2011 grant was used as follows;

Lion Foundation Newtown Park hire costs

4. Statement of Commitments

There were no operating or capital lease commitments at balance date (2010: nil).

5. Contingent Liabilities

There were no known contingent liabilities at balance date (2010: nil).

REVIEW ENGAGEMENT REPORT TO:**The Committee members of Athletics Wellington Incorporated Track and Field Committee**

We have reviewed the financial statements of Athletics Wellington Incorporated Track and Field Committee for the year ended 31 March 2011 in accordance with the Review Engagement Standards issued by the New Zealand Institute of Chartered Accountants.

A review is limited primarily to enquiries of company personnel and analytical review procedures applied to financial data and thus provides less assurance than an audit. We have not performed an audit and, accordingly, we do not express an audit opinion.

Based on our review, nothing has come to our attention that causes us to believe that the accompanying financial statements do not give a true and fair view.



WHK Wellington Partnership
Chartered Accountants
10 June 2011



LIFE MEMBERS

Bob Spence QSM

Clive Chandler

Bob Swain

John Riseborough

Peter Tearle

Dave Malcolm

Ray Wallis

Geoff Henry

Peter Jack

Alan Stevens MNZM

Jim Blair

Colin MacLachlan

Peter Maunder

Sylvia Maunder

Don Brown

Bruce Perry